

Movit is a tiltable mid-power floodlight available in three dimensions for wall, ground, with arm and on pole, to be used as direct or indirect lighting. Elegant in its thin proportions, Movit has a reduced visible impact. Easy to install it is available with symmetric or asymmetric distribution, to guarantee the maximum project flexibility for various applications.

TECHNICAL DESCRIPTION

Die-cast aluminium housing and extruded aluminium structure (arm version) with high corrosion resistance. Stainless steel A4 screws. Clear toughened glass diffuser. Aluminium reflectors. Silicone gaskets. Double powder paint.

MOVIT RECTANGULAR and SQUARE 220mm
Luminaire supplied with 1,5m neoprene H05RN-F cable

MOVIT SQUARE 320mm
Luminaire supplied with neoprene H05RN-F cable and connector in the base.

REGISTERED DESIGN

PROTECTION CLASS
IP66

ISOLATION CLASS
CLASS I

MECHANICAL RESISTANCE
IK 09
IK 10 MOVIT SQUARE 320mm



COLOURS

.01 White

.14 Aluminium Grey

.24 Anthracite Grey

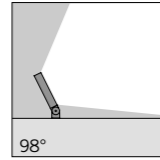


Design K.Begasse



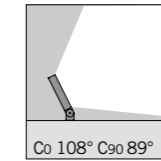
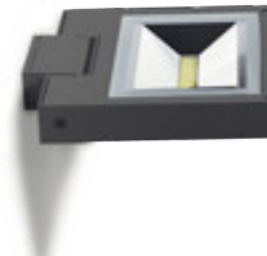
www.simes.it/movit

Rectangular with base



S.3005W Very Wide Flood beam with reflector
 LED MODULE **3000K** CRI90 919lm 7,7W
 (on request 2700K CRI90 873lm)
 (on request 4000K CRI80 1174lm)
 220V-240Vac 50/60Hz
 ON/OFF Not Dimmable

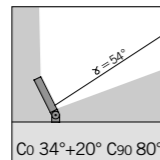
Square with base



S.3055W Very Wide Flood beam with reflector
 LED MODULE **3000K** CRI90 2258lm 19,1W
 (on request 2700K CRI90 2075lm)
 (on request 4000K CRI80 3011lm)
 220V-240Vac 50/60Hz
 ON/OFF Not Dimmable

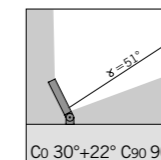
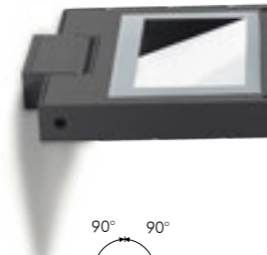
Version with DALI 2 / PUSH power supply available on request with surcharge.

Rectangular with base



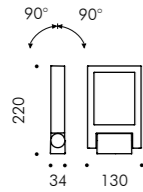
S.3000W Asymmetrical beam with reflector
 LED MODULE **3000K** CRI90 919lm 7,7W
 (on request 2700K CRI90 873lm)
 (on request 4000K CRI80 1174lm)
 220V-240Vac 50/60Hz
 ON/OFF Not Dimmable

Square with base



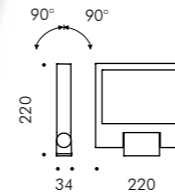
S.3050W Asymmetrical beam with reflector
 LED MODULE **3000K** CRI90 2258lm 19,1W
 (on request 2700K CRI90 2075lm)
 (on request 4000K CRI80 3011lm)
 220V-240Vac 50/60Hz
 ON/OFF Not Dimmable

Version with DALI 2 / PUSH power supply available on request with surcharge.



Accessory

S.3049
ACCESSORY STAKE
FOR MOVIT SQUARE 220mm
and MOVIT RECTANGULAR 130mm
 In polypropylene
 Colour: black (code .09)

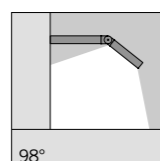
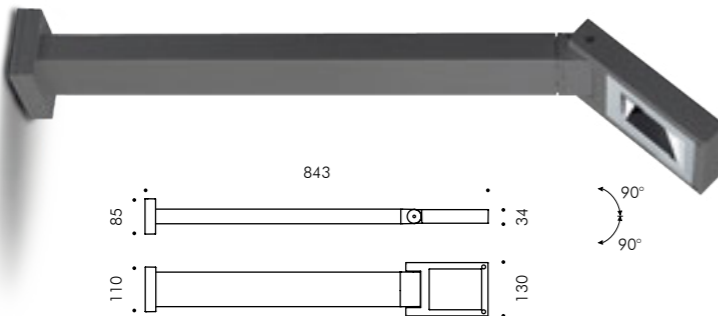


Accessory

S.3049
ACCESSORY STAKE
FOR MOVIT SQUARE 220mm
and MOVIT RECTANGULAR 130mm
 In polypropylene
 Colour: black (code .09)

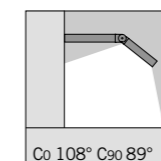
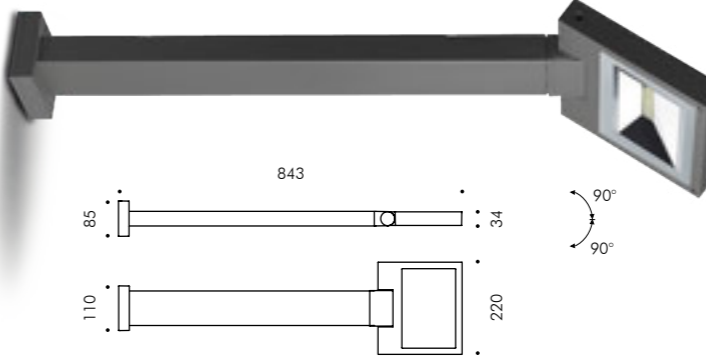


Rectangular with arm



S.3010W Very Wide Flood beam with reflector
 LED MODULE **3000K** CRI90 919lm 7,7W
 (on request 2700K CRI90 873lm)
 (on request 4000K CRI80 1174lm)
 220V-240Vac 50/60Hz
 ON/OFF Not Dimmable

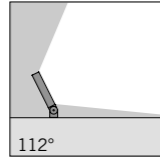
Square with arm



S.3060W Very Wide Flood beam with reflector
 LED MODULE **3000K** CRI90 2258lm 19,1W
 (on request 2700K CRI90 2075lm)
 (on request 4000K CRI80 3011lm)
 220V-240Vac 50/60Hz
 ON/OFF Not Dimmable

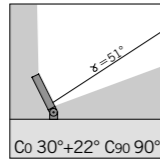
Version with DALI 2 / PUSH power supply available on request with surcharge.

Square with base

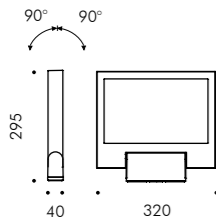


S.3075W Very Wide Flood beam with reflector
 LED MODULE 3000K CRI90 4725lm 40,1W
 (on request 2700K CRI90 4488lm)
 (on request 4000K CRI80 6037lm)
 220V-240Vac 50/60Hz
Dimmable DALI 2 / PUSH

Square with base



S.3070W Asymmetrical beam with reflector
 LED MODULE 3000K CRI90 4725lm 40,1W
 (on request 2700K CRI90 4488lm)
 (on request 4000K CRI80 6037lm)
 220V-240Vac 50/60Hz
Dimmable DALI 2 / PUSH



Accessory



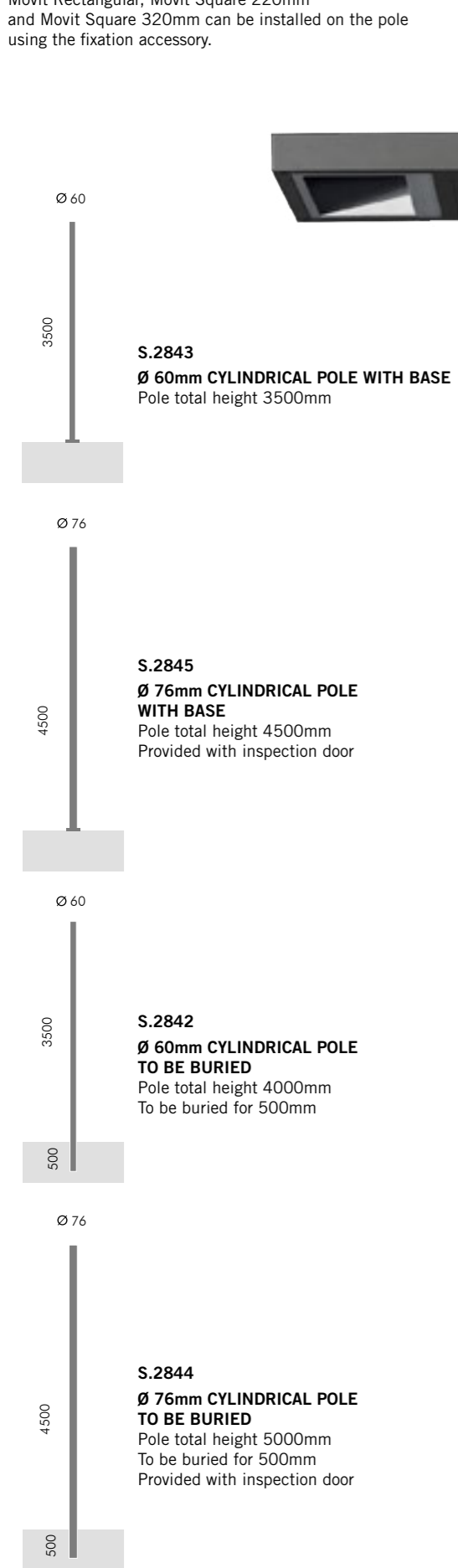
S.3079
ACCESSORY STAKE
FOR MOVIT SQUARE 320mm
 In polypropylene
 Colour: black (code .09)



MOVIT Pole mounted

SIMES

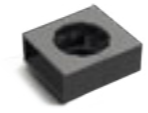
Movit Rectangular, Movit Square 220mm and Movit Square 320mm can be installed on the pole using the fixation accessory.



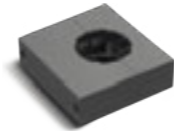
S.3046
ACCESSORY SINGLE
POLE MOUNTED Ø 60mm
For 1 Movit Rectangular 130mm
or for 1 Movit Square 220mm



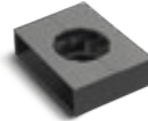
S.3047
ACCESSORY DOUBLE
POLE MOUNTED Ø 60mm
For 2 Movit Rectangular 130mm
or for 2 Movit SquareE 220mm



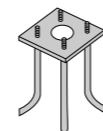
S.3044
ACCESSORY SINGLE
POLE MOUNTED Ø 60-76mm
For 1 Movit Square 320mm



S.3045
ACCESSORY DOUBLE
POLE MOUNTED Ø 60-76mm
For 2 Movit Square 320mm



S.2849
PLANTED ROOT
h=470mm and bolts in galvanized steel
with M16 threads for S.2843 / S.2845



S.2809
POLE BASE COVER
For pole with base and pole to be
buried Ø102mm or Ø121mm.
Die-cast aluminium housing.



ON REQUEST ADAPTOR
For cylindrical poles Ø 60mm / Ø 76mm
for S.2809 pole base cover

