





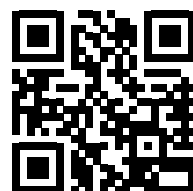
Loft spot

Adjustable projector

Loft Spot is a minimal and essential projector able to fit discreetly into any space.

The perfect control of the beam allows for a precise and functional lighting design.

Available in two different sizes with narrow or wide beam, Loft allows to play with light and to enhance the most difficult context.





Galleria Arte Moderna, Pordenone, Italy © ph. Elio e Stefano Ciol

LOFT SPOT Adjustable projector

Die-cast EN AB-47100 aluminium housing with high corrosion resistance.
Stainless steel screws.
Clear toughened glass diffuser.
Luminaire with one single cable entry and cable gland (Miniloft / Loft).
Silicone gaskets.
Double powder paint.

Protection class
IP65

Isolation class
CLASS I Ⓡ
CLASS II Ⓡ Microloft

Mechanical resistance
IK 06

Leds 4000K CRI90 versions are available on request.



S.1004

STAKE FOR MINILOFT and LOFT SLIM

In polypropylene
Colour: black (code .09)
The 100 mm upper part must stay out of the ground level, according with the norms.

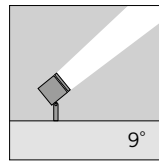
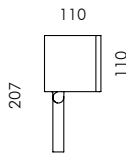
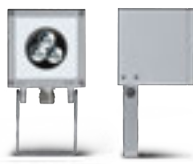
Colours:

- White (code .01)
- Aluminium grey (code .14)

For the latest technical information and luminaire updates with LED technology please refer to www.simes.it

REGISTERED DESIGN

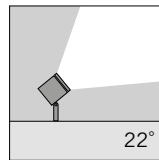
Miniloft spot



S.6665W

3 HIGH-POWER LEDs **3000K** CRI90 426lm
 Rated luminaire luminous flux 324lm
 Rated input power 6W
 220V-240V AC 50/60Hz / DC Not Dimmable

h(m)	9° Ø(m)	3000K E(lx)
1	0.16	7297
2	0.33	1824
3	0.49	811
4	0.66	456
5	0.82	292



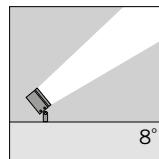
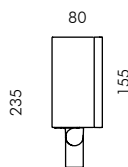
S.6664W

3 HIGH-POWER LEDs **3000K** CRI90 426lm
 Rated luminaire luminous flux 329lm
 Rated input power 6W
 220V-240V AC 50/60Hz / DC Not Dimmable

h(m)	22° Ø(m)	3000K E(lx)
1	0.40	1860
2	0.79	465
3	1.19	207
4	1.58	116
5	1.98	74

**Beam lenses available on request with no surcharge:
 34°**

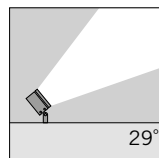
Loft slim spot



S.6643W

5 HIGH-POWER LEDs **3000K** CRI90 1285lm
 Rated luminaire luminous flux 1112lm
 Rated input power 17,7W
 220V-240V AC 50/60Hz / DC Not Dimmable

h(m)	8° Ø(m)	3000K E(lx)
2	0.29	8556
4	0.59	2139
6	0.88	951
8	1.17	535
10	1.47	342



S.6649W

5 HIGH-POWER LEDs **3000K** CRI90 1285lm
 Rated luminaire luminous flux 1032lm
 Rated input power 17,7W
 220V-240V AC 50/60Hz / DC Not Dimmable

h(m)	29° Ø(m)	3000K E(lx)
2	1.04	996
4	2.08	249
6	3.13	111
8	4.17	62
10	5.21	40

**Beam lenses available on request with no surcharge:
 38°, 58° and 10°x40°**