



"Officina Vitae Negre", Cuneo, Italy - Damilano studio Architects © Andrea Martraddona

Stainless steel



# Linear Walk-Over

LINEAR is a range of walk-over luminaires developed for elegant grazing light effects. LINEAR is perfect to underline paths and building façades. The minimalist design and shallow recessing depth allow for discrete installation in narrow niches.





Chapel, Pazin, Croatia © LUKS d.o.o.

## LINEAR WALK-OVER

Die-cast EN AB-44100 and extruded EN AW-6060 aluminium housing with high corrosion resistance.

Marine grade stainless steel AISI 316L front trim 3 mm thick.

Toughened glass diffuser

10 mm thick for Minilinear,

10 mm thick for Linear.

99.98% pure aluminium reflectors.

Stainless steel screws.

Pre-wired luminaire with neoprene cable and connector.

Silicone gaskets.

Recessing box in stainless steel (Linear), in aluminium (Minilinear).

**Double powder paint.**

### Protection class

IP65 / IP67

### Isolation class

CLASS I ⊕

CLASS III ⚡ RGB

### Mechanical resistance

IK 09

Leds 4000K CRI90 versions are available on request.

RGBW versions requires constant voltage remote PWM power supply (page 471).



### S.5506

4 way connector for through wiring (in/out).

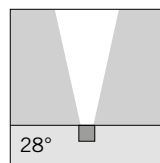
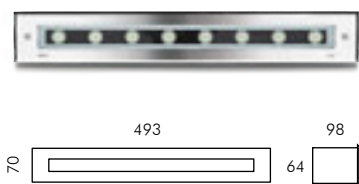
Maximun weight 500 Kg

### Finishing:

○ Stainless steel (code .19)

*For the latest technical information and luminaire updates with LED technology please refer to [www.simes.it](http://www.simes.it)*

### Minilinear semiacid-etched glass



### S.5495W.19

8 HIGH-POWER LEDs **3000K** CRI90 1374lm  
 Rated luminaire luminous flux 826lm  
 Rated input power 13,8W  
 220V-240V AC 50/60Hz / DC Not Dimmable

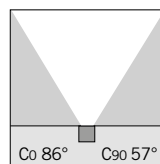
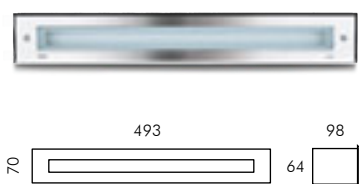
**Beam lenses available on request with no surcharge:  
 7°, 39°**

T 40°C

h(m)	E(lx)		
5	4	4	3
4	7	7	4
3	18	13	5
2	55	27	4
1	258	30	1

0.15 m      0 0.5 1 1.5 (m)

### Minilinear acid-etched glass



### S.5498W.19

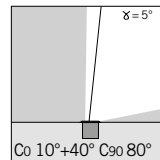
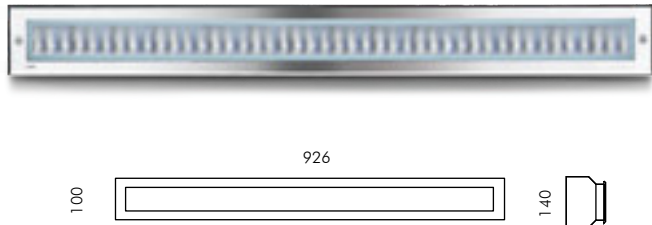
MID-POWER LEDs **3000K** CRI90 958lm  
 Rated luminaire luminous flux 392lm  
 Rated input power 10,7W  
 220V-240V AC 50/60Hz / DC Not Dimmable

T 40°C

h(m)	E(lx)		
2.5	5	2	2
2.0	5	4	2
1.5	11	8	4
1.0	34	20	6
0.5	170	46	5

0.15 m      0 0.5 1 1.5 (m)

### Linear semiacid-etched glass



### S.5942W.19

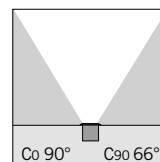
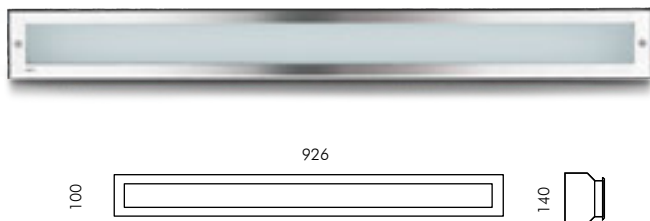
18 HIGH-POWER LEDs **3000K** CRI90 2550lm  
 Rated luminaire luminous flux 2028lm  
 Rated input power 30,5W  
 220V-240V AC 50/60Hz / DC Not Dimmable  
 Asymmetric reflector

T 50°C

h(m)	E(lx)		
5	4	3	2
4	7	6	4
3	15	12	6
2	40	24	8
1	280	60	5

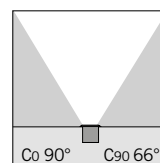
0.20 m      0 1 2 3 (m)

### Linear acid-etched glass



### S.5931.19

MID-POWER LEDs RGB  
 Rated input power 30W **24V PWM**  
 Requires constant voltage remote PWM  
 power supply (page 471)  
 T 50°C



### S.5935W.19

MID-POWER LEDs **3000K** CRI90 4100lm  
 Rated luminaire luminous flux 675lm  
 Rated input power 21,2W  
 220V-240V AC 50/60Hz / DC Not Dimmable

T 50°C

h(m)	E(lx)		
2.5	5	5	3
2.0	10	9	6
1.5	22	18	9
1.0	66	41	13
0.5	300	82	12

0.20 m      0 0.5 1 1.5 (m)