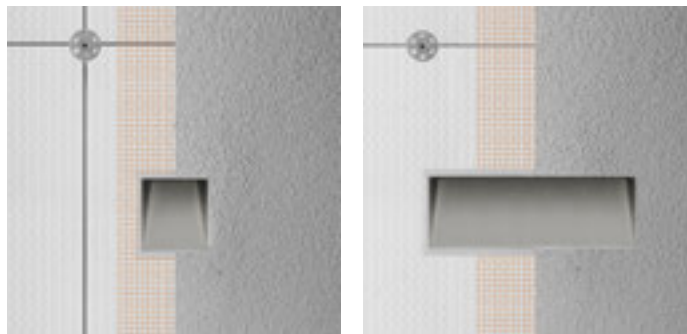




Ghost

for Insulation panels



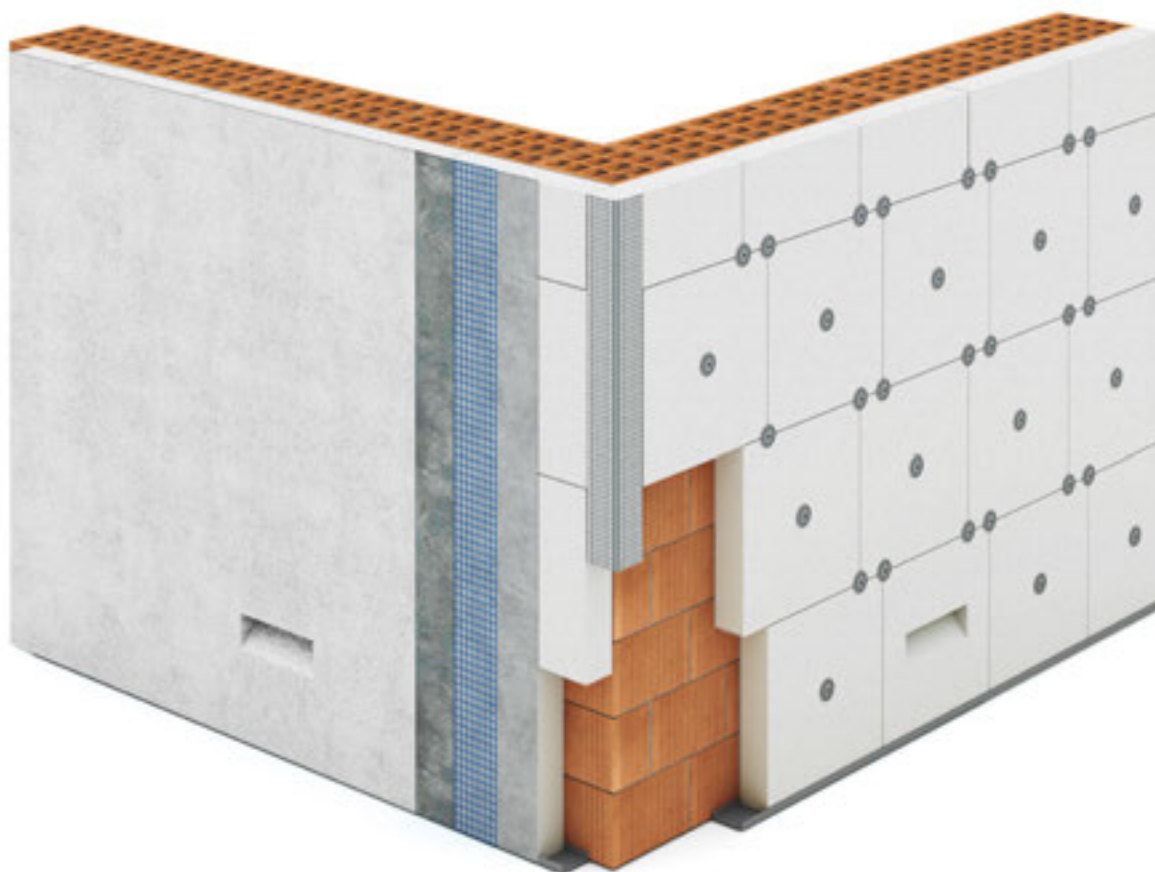
Ghost for insulation panels is a wall mounted signal lighting fixture. The luminous housing is installed together with the other insulating panels of polystyrene. In this way the light is completely integrated in the insulated "shell" of the architecture without jeopardizing the thermal insulation and therefore maintain the energy efficiency rating of the building.

Ghost

for Construction materials with plaster finish



Ghost for construction materials is a further development of the Ghost range that allows to create lit voids into walls built from any material that require a plaster finish. The special recessed housing protrudes by 15mm so to consider the various layers of plaster so to give a perfect flush finish. The fixtures inclined aperture can be painted and is therefore completely integrated into the architecture.



GHOST For Insulation panel

Ghost for insulation panel may be installed inside the exterior insulating panel. The degree of insulation of the house will stay unchanged for it is manufactured of the same type of polystyrene insulation.

Attention should be paid though to the positioning of the corrugated tube for mains electrical connection.

The height of Ghost for insulation panel has been designed to take on standard AED35 (50cm) insulating blocks while the thickness (10cm) facilitates the integration in insulating panels with the same or greater thickness.

The cavity is pre-finished and ready for painting.

After installation the finish of the wall will proceed as usual:

1. Lay the grid, first levelling;
2. Carve the grid at the Ghost's cavity;
3. Second levelling and possible whitening;
4. At the end of the work install the lighting body.

MICROGHOST SQUARE

Requires a remote constant voltage driver.
Pre-wired luminaire with 3m of neoprene cable.

CLASS III ⚡

GHOST HORIZONTAL

Pre-wired luminaire with 0,3m neoprene cable and connector in the recessed box.

CLASS I ⚡

Protection class

IP65

Mechanical resistance

IK 10

Leds 4000K CR180 versions are available on request.

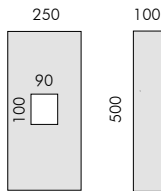
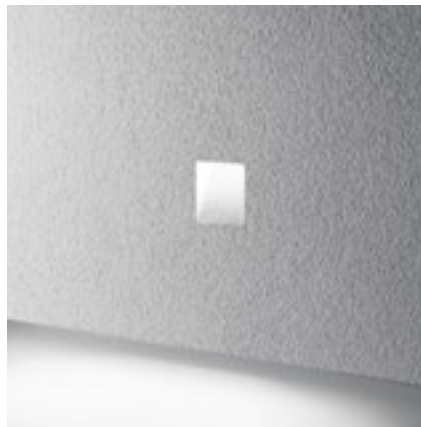
**PATENT PENDING
REGISTERED DESIGN**

For the latest technical information and luminaire updates with LED technology please refer to www.simes.it



Luminaire guide video

Microghost Square for insulation panel



C.8130W

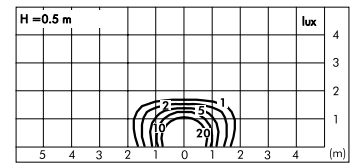
AE D35 polystyrene block with housings in polypropylene

+

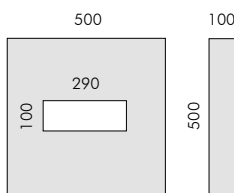
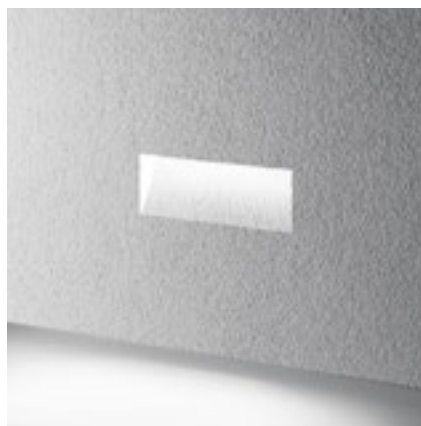
Lighting element with MID-POWER LEDs **3000K** CRI80 320lm

Rated luminaire luminous flux 240lm
Rated input power flux 4W **24V DC**

Requires a remote constant voltage driver (page 468-469)



Ghost Horizontal for insulation panel



C.8122W

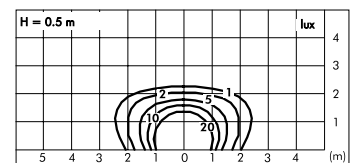
AE D35 polystyrene block with housings in polypropylene

+

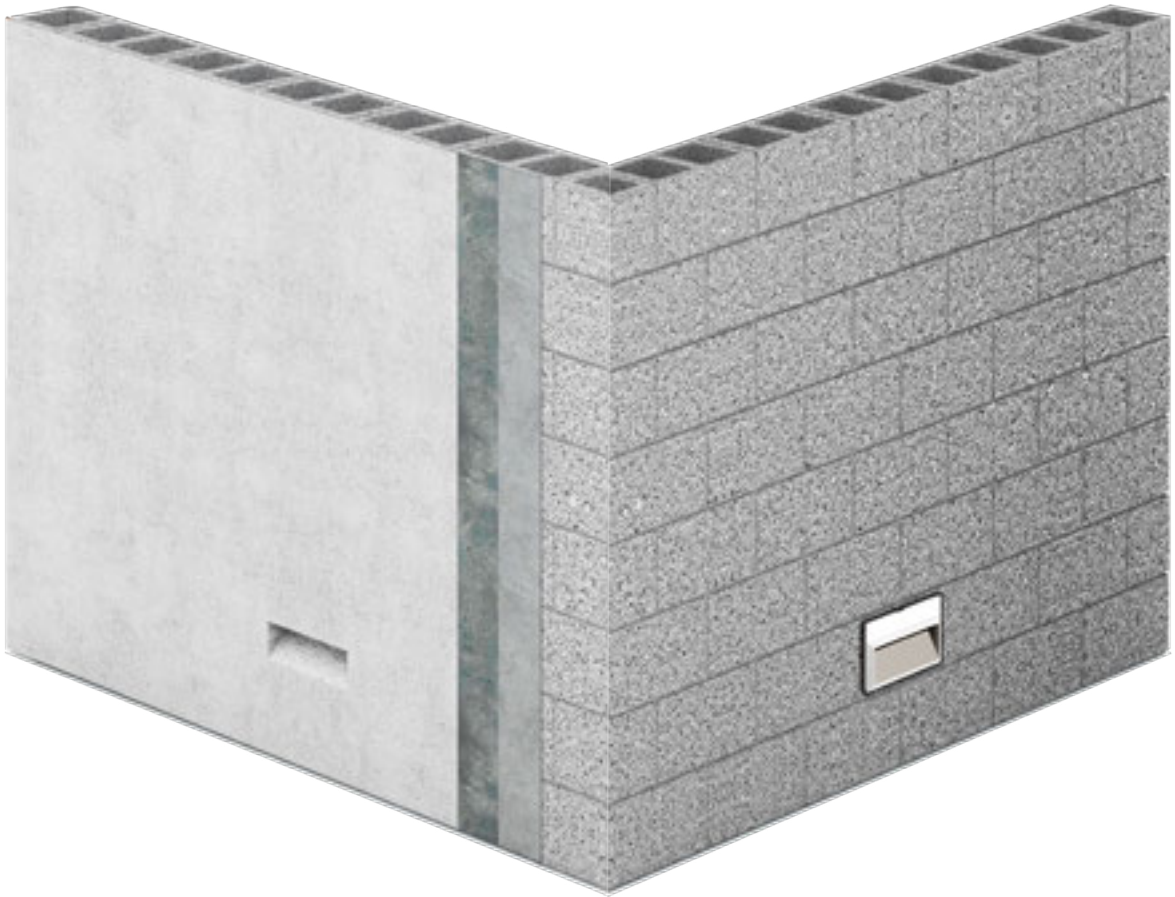
Lighting element with MID-POWER LEDs **3000K** CRI80 880lm

Rated luminaire luminous flux 490lm
Rated input power flux 10W

220V-230V AC 50/60Hz Phase-cut dimmable



Example: Wall in breeze blocks



GHOST For construction materials with plaster finish


Ghost for breeze block application is easily applied in walls made of perforated bricks or cement conglomerate. The luminaire is designed to be wall mounted and completely integrated with the architecture of which it will take over the finish. The cavity is pre-finished and ready for painting.

The procedure is as follows:

1. Plan the positioning of the corrugated tube for mains electrical connection;
2. Make a niche to insert the Ghost polystyrene block, paying attention to its aligning;
3. Lay the fixative grid that connects the cement conglomerate wall to the Ghost's polystyrene block;
4. Enclose the luminaire in the wall, cut the grid at the Ghost's cavity and finish off;
5. Once the work is finished, the luminaire may be installed.

MICROGHOST SQUARE

Requires a remote constant voltage driver.
Pre-wired luminaire with 3m of neoprene cable.

CLASS III 

GHOST HORIZONTAL

Pre-wired luminaire with 0,3m neoprene cable and connector in the recessed box.

CLASS I 

Protection class

IP65

Mechanical resistance

IK 10

Leds 4000K CRI80 versions are available on request.

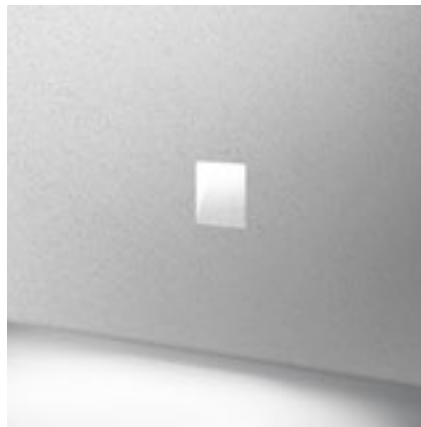
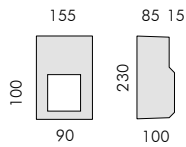
PATENT PENDING REGISTERED DESIGN

For the latest technical information and luminaire updates with LED technology please refer to www.simes.it



Luminaire guide video

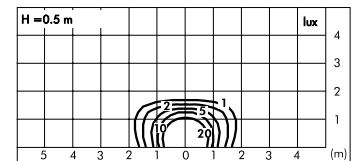
Microghost Square



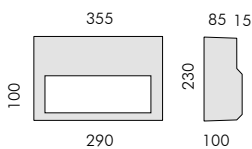
C.8230W

AE D35 polystyrene block with housings in polypropylene
+
Lighting element with MID-POWER LEDs
3000K CRI80 320lm
Rated luminaire luminous flux 240lm
Rated input power flux 4W **24V DC**

Requires a remote constant voltage driver (page 468-469)



Ghost Horizontal



C.8222W

AE D35 polystyrene block with housings in polypropylene
+
Lighting element with MID-POWER LEDs
3000K CRI80 880lm
Rated luminaire luminous flux 490lm
Rated input power flux 10W
220V-230V AC 50/60Hz Phase-cut dimmable

