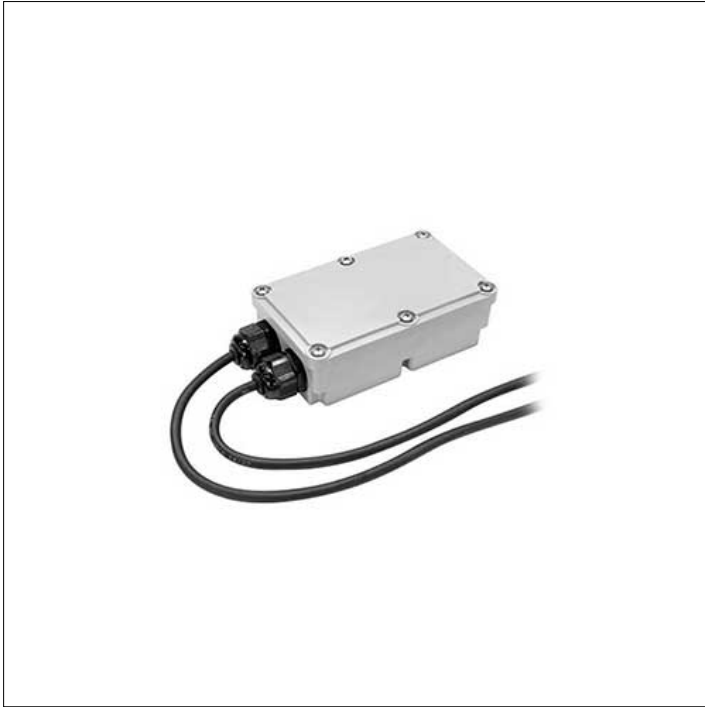


**ACCESSORY****S.2477  
INTERFACE DALI DT8**

The following devices/interfaces are used to control the color, temperature and brightness of the TUNABLE WHITE LED via DALI (DT8 ) signal. These devices need a 24Vdc power supply Not Dimmable ( type S.2405, S.2406, S.2445 and S.2446) and must be placed between the 24Vdc power supply and the luminaires. Therefore choose a 24V power supply based on the maximum power used of the luminaires up to a maximum of 96W.  
IP67 Operating mode BALANCE & DIM Dimensions  
175,5mmx86,5mmx43mm