



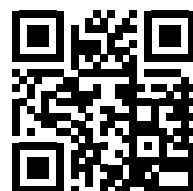
Outline

Adjustable projector

A basic and sophisticated design created for a lighting system that shapes the space with a distinctive, clean and tasteful style. Whether as pole, wall or floor mounted, Outline enhances the expressivity of pure aluminium through minimal and simple lines that illuminate space and reveal its true potential.

Thanks to its high resistance to oxidation and double painting process, Outline projector combines functionality and architectural expressiveness by lighting the space with natural charm.

Design K.Begasse





OUTLINE Adjustable projector

Die-cast EN AB-47100 aluminium housing with high corrosion resistance.
 Stainless steel screws.
 Clear toughened glass diffuser 5mm thick.
 HI-GRADE aluminium reflectors for OUTLINE FLOOD.
 Concentrating or diffusing lenses for OUTLINE SPOT.
 Pre-wired luminaire with neoprene cable and connector.
 Silicone gaskets.
Double powder paint.

Colour:

Aluminium grey (code 14)

Protection class
 IP65

Isolation class
 CLASS I ⊕

Mechanical resistance
 IK 08

Leds 4000K versions are available on request.

For the latest technical information and luminaire updates with LED technology please refer to www.simes.it

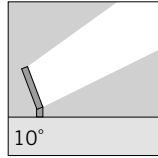
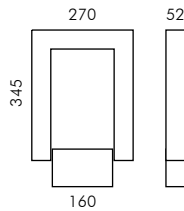
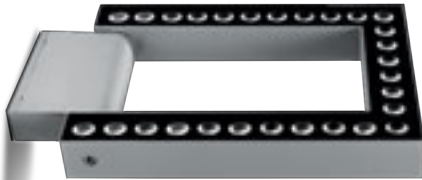
REGISTERED DESIGN



S.3079
ACCESSORY STAKE FOR OUTLINE
 In polypropylene
 Colour: black (code .09)

S.5504
 3 way connector for through wiring (in/out).
 To install inside the fixing base.

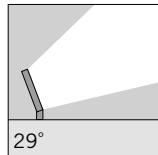
Outline spot



S.3100W □

28 HIGH-POWER LEDs **3000K** CRI90 5500lm
 Rated luminaire luminous flux 4461lm
 Rated input power 61W
 220V-240V AC 50/60Hz / DC Not Dimmable

h(m)	10° Ø(m)	3000K E(lx)
4	0.73	5145
8	1.46	1286
12	2.18	572
16	2.91	322
20	3.64	206



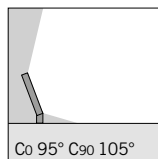
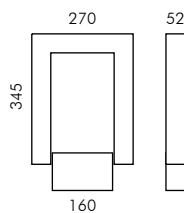
S.3101W □

28 HIGH-POWER LEDs **3000K** CRI90 5500lm
 Rated luminaire luminous flux 4336lm
 Rated input power 61W
 220V-240V AC 50/60Hz / DC Not Dimmable

h(m)	29° Ø(m)	3000K E(lx)
4	2.05	1028
8	4.11	257
12	6.16	114
16	8.22	64
20	10.27	41

**Beam lenses available on request with no surcharge:
 42°**

Outline flood



S.3105W □

MID-POWER LEDs **3000K** CRI80 5500lm
 Rated luminaire luminous flux 4420lm
 Rated input power 46W
 220V-240V AC 50/60Hz / DC Not Dimmable

h(m)	95°x105° Ø(m)	3000K E(lx)
2	4.38x5.23	431
4	8.76x10.46	108
6	13.14x15.70	48
8	17.52x20.93	27
10	21.90x26.16	17



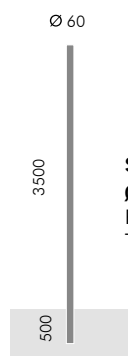
OUTLINE can be installed on the pole using the fixation accessory.



S.2843
Ø 60 mm CYLINDRICAL POLE WITH BASE
 Pole total height 3500mm



S.2845
Ø 76 mm CYLINDRICAL POLE WITH BASE
 Pole total height 4500mm
 Provided with inspection door

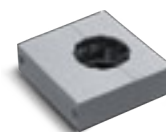


S.2842
Ø 60 mm CYLINDRICAL POLE TO BE BURIED
 Pole total height 4000mm
 To be buried for 500mm

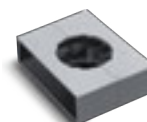


S.2844
Ø 76 mm CYLINDRICAL POLE TO BE BURIED
 Pole total height 5000mm
 To be buried for 500mm
 Provided with inspection door

S.3044
ACCESSORY SINGLE
POLE MOUNTED Ø 60-76 mm
 For 1 OUTLINE



S.3045
ACCESSORY DOUBLE
POLE MOUNTED Ø 60-76 mm
 For 2 OUTLINE



S.2849
PLANTED ROOT FOR S.2843 / S.2845
 h=470mm and bolts in galvanized steel with M16 threads.

